

Kjellberg
CUTTING



VISIBLY DIFFERENT



SERIES

Q 1500 (plus) | Q 3000 (plus) | Q 4500



PLASMA CUTTING 0.018 - 4 3/4 INCHES

100
YEARS
KJELLBERG
MADE IN GERMANY

Q-Series

NEXT GENERATION PLASMA CUTTING

The innovative Q-Series made by Kjellberg Finsterwalde combines precise plasma cutting at an extraordinary level with the requirements of digitalized production.

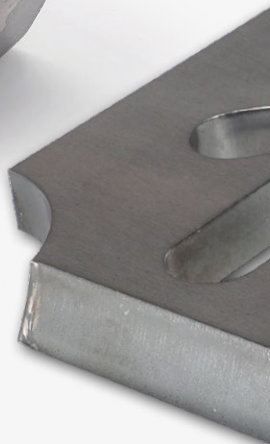
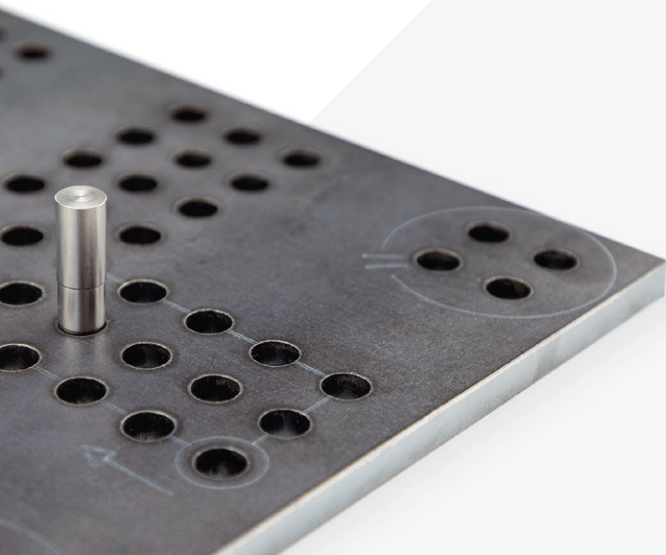
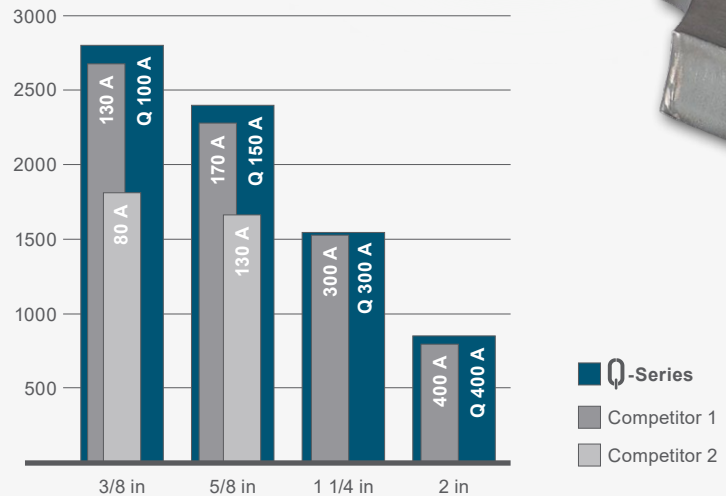
The Q-Series offers performance and productivity and above all stands for consistent and reliable cutting quality. High cutting speeds ensure greater efficiency and lower costs per cutting meter. Latest inverter technology also reduces the CO₂ footprint and thus contributes to climate protection.

Quality & Technology

- ✓ Plasma cutting up to 4 3/4 inches
- ✓ Marking, notching, graining
- ✓ Bevel and underwater plasma cutting
- ✓ Exact inner and outer contours
- ✓ Precise holes with a ratio of 0.75:1



Cutting speed in inch/min
Mild steel



Q-TORCH

PUSH YOUR LIMIT

For more Performance

In order to be able to react flexibly to future requirements, the cutting performance of the plasma cutting systems Q 1500 plus and Q 3000 plus can be increased by easy to mount **upgrade kits**.

Plug and play of additional inverter modules extends the cutting current range to 300 A or 450 A.



One for All

All components can be used universally for the entire Q-Series. By using fully automatic plasma flow control, high-quality and reproducible results are achieved during cutting and marking.



Automatic plasma flow control Q-Gas
for cutting all metals

Option:

Automatic plasma flow control Q-Gas O₂
for cutting mild steel with oxygen and stainless steel/aluminum with nitrogen

Digitalization & eService

Q-Series plasma cutting systems meet Industry 4.0 standards. With the browser-based user interface **Q-Desk** developed by Kjellberg, real-time process data and information can be analyzed, monitored and controlled in order to increase the effectiveness of production and optimize the use of resources.

The data can be made available on all commercially devices (smartphone, tablet) and can also be transferred and further processed via **MQTT protocol**.

The integrated **Kjellberg eService** ensures reliability in production through remote diagnostics, remote monitoring and regular updates.




Q-DESK

Technical data	Q 1500 Q 1500 plus		Q 3000 Q 3000 plus		Q 4500	
Cutting current at 100 % d.c. ¹	20 - 150 A		20 - 300 A		20 - 450 A	
Marking current at 100 % d.c. ¹	5 - 60 A					
Cutting ranges	Q-Gas O ₂	Q-Gas	Q-Gas O ₂	Q-Gas	Q-Gas O ₂	Q-Gas
Mild steel	0.018 - 1 1/2 in		0.018 - 2 1/4 in		0.018 - 2 1/2 in	
Recommended	2 1/4 in		3 in		9 1/2 in	
Maximum	1 1/4 in		2 in		4 3/4 in	
Piercing ²					2 in	
Stainless steel	1 1/2 in		2 1/4 in		2 1/4 in	
Maximum	1 in		1 1/4 in		1 1/4 in	
Piercing ²					4 3/4 in	
Aluminum	1 1/2 in		2 1/4 in		2 1/4 in	
Maximum	1 in		1 1/2 in		1 1/2 in	
Piercing ²					4 3/4 in	
					2 1/4 in	
Plasma gases	Q-Gas O ₂ O ₂ , N ₂ , Air					
Q-Gas	O ₂ , N ₂ , Air, Ar, H ₂ , F5 (95 % N ₂ / 5 % H ₂)					
Swirl gases	Q-Gas O ₂ O ₂ , N ₂ , Air					
Q-Gas	O ₂ , N ₂ , Air, F5 (95 % N ₂ / 5 % H ₂)					
Marking gases	Ar, N ₂ , Air					
Dimensions (LxWxH)	45.28 x 27.36 x 57.48 in 1.150 x 695 x 1.460 mm					
Mass	239/280 kg		297/317 kg		354 kg	
Fuse, slow	63 A		125 A		180 A	
Max. Connected load	35 kVA		72 kVA		109 kVA	
Protection class	IP 21S					
Mains voltages	380 - 400 V, 50/60 Hz 415 - 440 V, 50/60 Hz 440 - 480 V, 50/60 Hz					

¹ Ambient temperature 40 °C

² Extension of piercing capacity with ProPierce technology in combination with Q-Gas.

Kjellberg  Smart Focus, HiFocus and PerCut are trademarks of Kjellberg Foundation and registered with the U.S. Patent and Trademark Office.

Contact

Kjellberg Cutting, Inc.

1504 Eagle Court Unit 4 | Lewisville | Texas 75057 | USA

Office: +1 469.770.9799 | sales@kjellbergcutting.com

www.kjellbergcutting.com

Copyright © 2023 Kjellberg Cutting, Inc.

09107123



Subject to change without prior notice.